

# Tlaunch, the T<sub>E</sub>X Live Launcher

Siep Kroonenberg

Rijksuniversiteit Groningen  
the Netherlands

Dante Frühjahrstagung 2017  
March 24, 2017

# The T<sub>E</sub>X Live Launcher

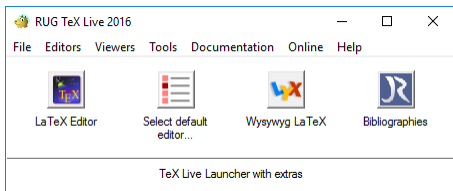
# The university network

- Centrally managed Windows workstations (RES software)
- Roaming profiles
- Remote desktop
- Users have limited rights

# Problem

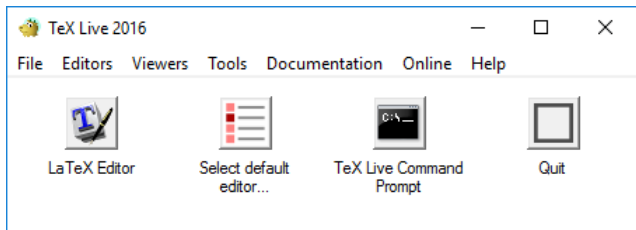
- T<sub>E</sub>X Live already present on network
- Windows-specific configuration still to be done
- Integrate other T<sub>E</sub>X-related software

# The launcher

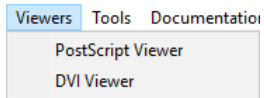


- Menus and buttons replace  $\text{T}_{\text{E}}\text{X}$  Live submenu
- User configuration at first startup
- Ini file
- Forgetter
- Ini file can be overridden by higher-priority one

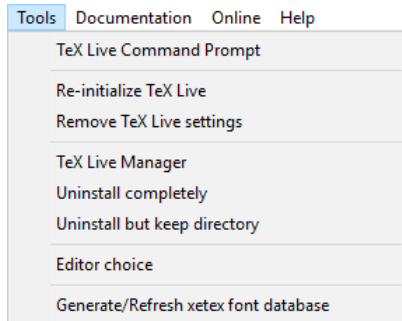
# Default T<sub>E</sub>X Live configuration



# Viewers menu

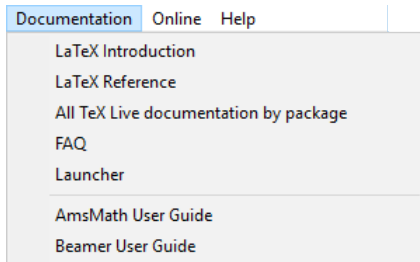


# Tools menu

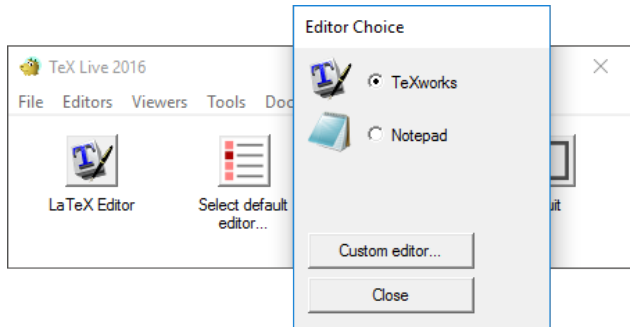




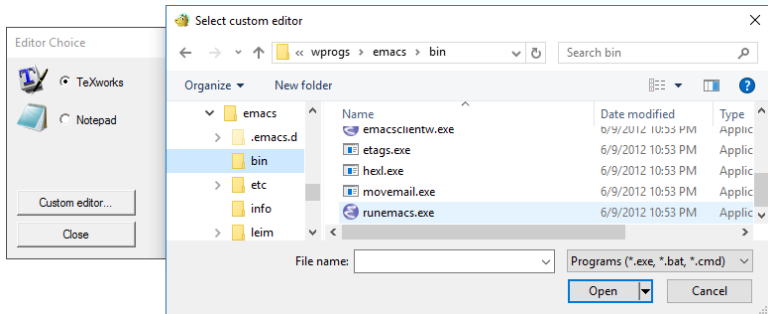
# Documentation menu



# Editor choice



# Custom editor



# The ini file

# Ini file

- Filetype associations
- Menu- and button controls
- Options for path adjustment, filetypes

# Windows filetype associations

- Filename extensions are associated with filetypes.
- Filetypes are associated with commands.

# Filetype definitions

```
[FT:TL.TeXworks.edit.%VERSION%]  
COMMAND="%tlroot%\bin\win32\TeXworks.exe"  
EXTENSIONS=.tex .cls .sty
```

```
[FT:TL.DVIOUT.view.%VERSION%]  
COMMAND="%tlroot%\bin\win32\dviout.exe"  
EXTENSIONS=.dvi
```

# Menus

[MN:File]

Browse TeX Live installation=explorer.exe "%tlroot%\.."

Quit=FU:quit

[MN:Viewers]

PostScript Viewer=FT:TL.PSView.view.%VERSION%

DVI Viewer=FT:TL.DVIOUT.view.%VERSION%

[MN:Documentation]

LaTeX Introduction=SO:%tlroot%\texmf-dist\...\lshort.pdf

LaTeX Reference=SO:%tlroot%\texmf-dist\...\latex2e.pdf

All TeX Live documentation by package=SO:%tlroot%\doc.html

FAQ=SO:%tlroot%\texmf-dist\doc\generic\FAQ-en\newfaq.pdf

=

AmsMath User Guide=SO:%tlroot%\texmf-dist\...\amsl.doc.pdf

Beamer User Guide=SO:%tlroot%\texmf-dist\...\beameruserguide.pdf



# Buttons

```
[Buttons]
LaTeX Editor=FU:default_editor
Select default editor...=FU:editor_select
TeX Live Command Prompt=%comspec% /T "TeX Live" /e:on
Quit=FU:quit
```

# General section

```
[General]
```

```
; allowed values: none, new, overwrite
```

```
FILETYPES=new
```

```
; 1: modify; anything else: leave alone
```

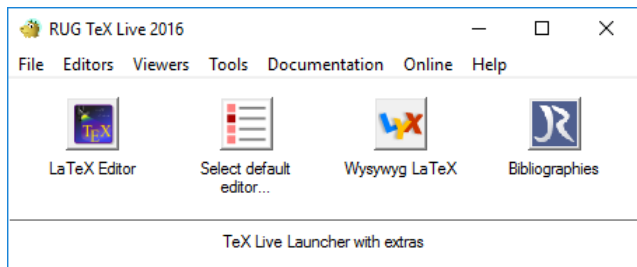
```
SEARCHPATH=1
```

# Launcher-based installations

- T<sub>E</sub>X Live installer gets new option for desktop integration
- Launcher has ‘install’- and uninstall modes
- tlaunchmode script

# **The RUG installation**

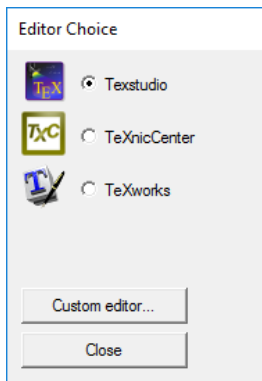
# The RUG installation



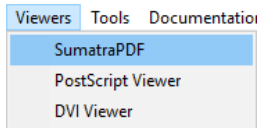
# Add-ons

- Editors: TeXstudio, TeXnicCenter
- LyX (wysywyg LaTeX editor)
- Pdf viewer: SumatraPDF
- Bibliography manager: JabRef
- Epspdfk GUI conversion utility
- LaTeX house style

# Editor choice

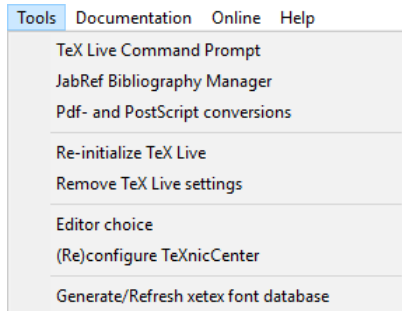


# Viewers menu





# Tools menu



# Documentation menu

Documentation Online Help

- LaTeX Introduction
- LaTeX Reference
- All TeX Live documentation by package
- FAQ
- Launcher

---

- AmsMath User Guide
- Beamer User Guide
- Beamer Examples

---

- TeXstudio Program Help
- TeXstudio LaTeX Help
- TeXnicCenter Help

---

- RuG presentations 2016
- Presentation sample files

---

- RuG LaTeX Tutorial
- Practice files

# Integrating add-ons

- Install on scratch system, and copy its directory to the network.
- *Many T<sub>E</sub>X-related programs do not require installation.*
- Some fixes may be desirable.

# Fixes

- LyX: copy pre-made configuration to user profile
- SumatraPDF: registry entry to make it non-portable
- TeXstudio, SumatraPDF: suppress checking for new release (config file)
- TeXnicCenter: configure output profiles (registry)
- TeXworks: add some dictionaries

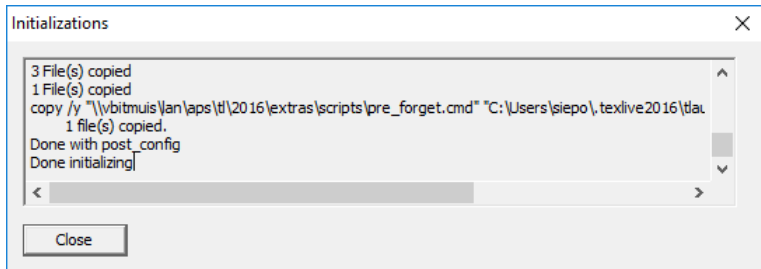
# RUG post-config

[Strings]

TLEXTRAS=%tlroot%\extras

TLSCRIPTS=%TLEXTRAS%\scripts

POST\_CONFIG=%TLSCRIPTS%\post\_config.cmd



# Problems

# Problems: filetype associations

- Filetype associations do not roam; solution planned in future update; not a problem with RES
- 'User choice' filetype associations do roam, but cannot easily be set programmatically

# Uninstalling and forgetting

- Forgetter may not show up in start menu
- Inappropriate UAC prompt when invoked from Settings / Apps & features



# RES idiosyncracies

- RES preempts certain file extensions (but lets other filetype associations roam)
- User-initiated switch to new release seems impossible
- Garbage from previous releases may get in the way
- User searchpath ineffective under RES

# Searchpath remedies

- Not a problem for T<sub>E</sub>X Live GUI programs (`runscript` wrapper)
- Not a problem for programs started from the launcher
- Wrapper for TeXstudio
- TeXnicCenter uses registry settings
- The ICT people need to take care of external programs such as R and WinEdt which use LaT<sub>E</sub>X

[http://mirror.ctan.org/support/  
tlaunch/tlaunch.pdf](http://mirror.ctan.org/support/tlaunch/tlaunch.pdf)